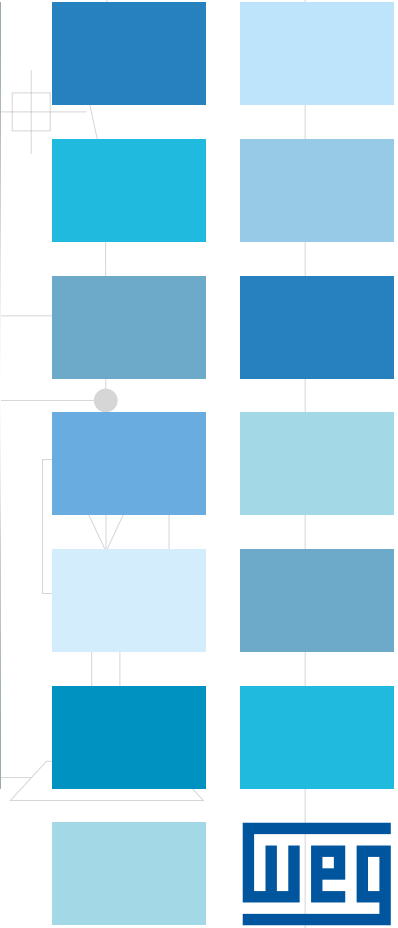
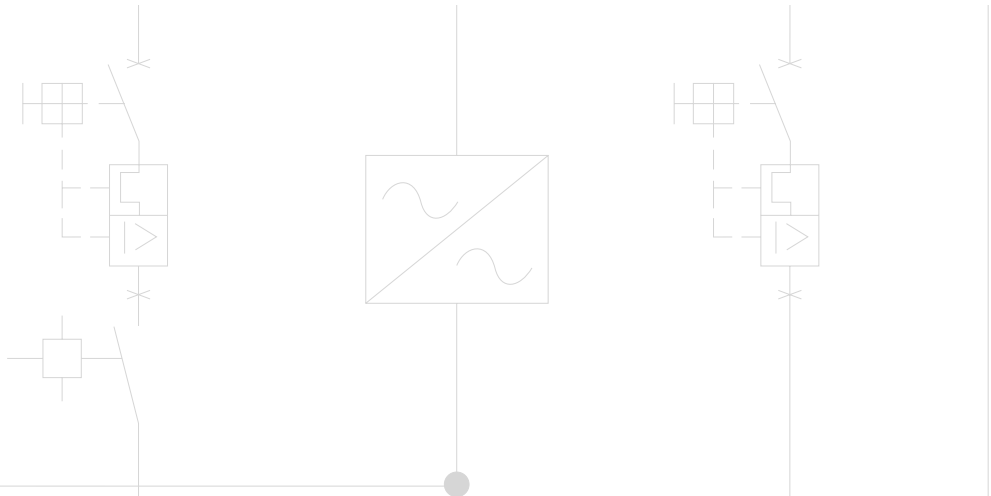


CFW500 Machinery Drives

Variable Speed Drives





CFW500

One VSD, endless possibilities

The CFW500 has advanced Plug & Play options, developed for fast commissioning, providing great flexibility and competitive advantage while offering excellent performance and reliability. Designed exclusively for industrial or professional use, is perfect for OEM, system integrators, panel installers and End Users providing great benefit and added value.



Single or
Three-Phase
0.18 to 22 kW
0.25 to 30 HP

Compatible
Wide range of accessories

Flexible
Wide range of accessories and functions

Robust
150% overload for one minute

Efficient
High performance for machines and processes

Reliable
Same trustworthiness of WEG products

Integrated
Fieldbus networks

Characteristics

Plug-in module

Flash memory module

SoftPLC

High overload capacity

Functions to streamline operation and performance

WEG quality

Communication networks



Advantages

Benefits

The optional communication network and I/O modules are fast and easily installed, allowing adaptation of the standard VSD to each application.

Within seconds, it is possible to download the SoftPLC program and parameters set from a CFW500 to others without powering them up.

Built-in PLC (SoftPLC), allowing the VSD, motor and application to work in an interactive way. It allows the user to implement customized logic and applications.

It withstands an overload of 150% for one minute every 6 minutes, at an ambient temperature of 50 °C.

PID: process control.
Sleep: disables the VSD automatically.

Flying start: allows control of a motor that is turning freely, accelerating it from the speed at which it was running.

Ride through: keeps the VSD in operation during voltage dips.

100% of the VSDs are tested with load at the factory under rated conditions.

Protection against ground fault, short circuit, overtemperature and others.

Thermal protection of IGBTs based on manufacturer curve.

Conformal Coating (Tropicalization) as Standard. Classified as 3C2 according to IEC 60721-3-3.

CANopen, DeviceNet, Profibus-DP, Ethernet-IP, Profinet-IO, Modbus-TCP and Modbus-RTU.

Time saving, standardization and optimized costs according to the necessity.

Fast, easy and reliable programming for manufacturers that produce machines in large scale.

It eliminates the necessity of an external PLC, reducing costs, optimizing space and simplifying the system.

It does not require oversizing the VSD.

Energy saving.

It allows fast operating response of the machine and prevents occasional mechanical breakdowns.

It prevents machine stoppage and downtime.

High reliability.

It prevents damage to the inverter which can be caused by adverse situations, normally external factors.

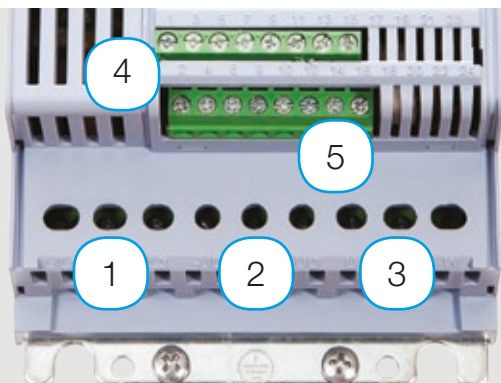
VSD lifetime is extended: protection against chemically active substances, related to contamination from the atmosphere.

Full integration with process network.

Fast Configuration



- Quick commissioning
- Innovative design, compact and uniform
- Optimised cost x benefit



With plug-in module CFW500-IOS

- 1 - Power terminals
- 2 - Access to DC link
- 3 - Motor terminals
- 4 - Control terminals (I/Os)
- 5 - RS485 port



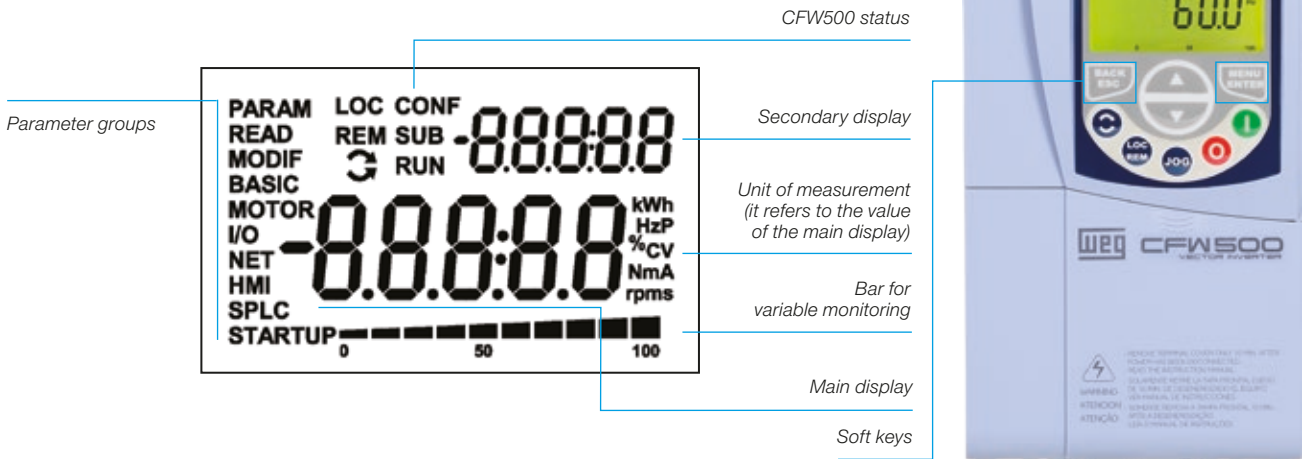
Applications

- Centrifugal pumps
- Process dosing pumps
- Fans / exhausters
- Mixers
- Compressors
- Conveyor belts
- Roller tables
- Granulators / palletizers
- Dryers
- Rotary filters



Human-Machine Interface

- View three selected parameters at the same time



Friendly Programming

- Oriented start-up: programming step by step
- Easy and intuitive operation, fast access to the parameters
- Parameter group: it directs to the parameters of interest

Remote HMI

Solution for panel door or machine console.



Energy Efficiency

In industry, electric motors are responsible for nearly 70% of all the electric energy consumed. Using a VSD, it is possible to reduce consumption by up to 40%.

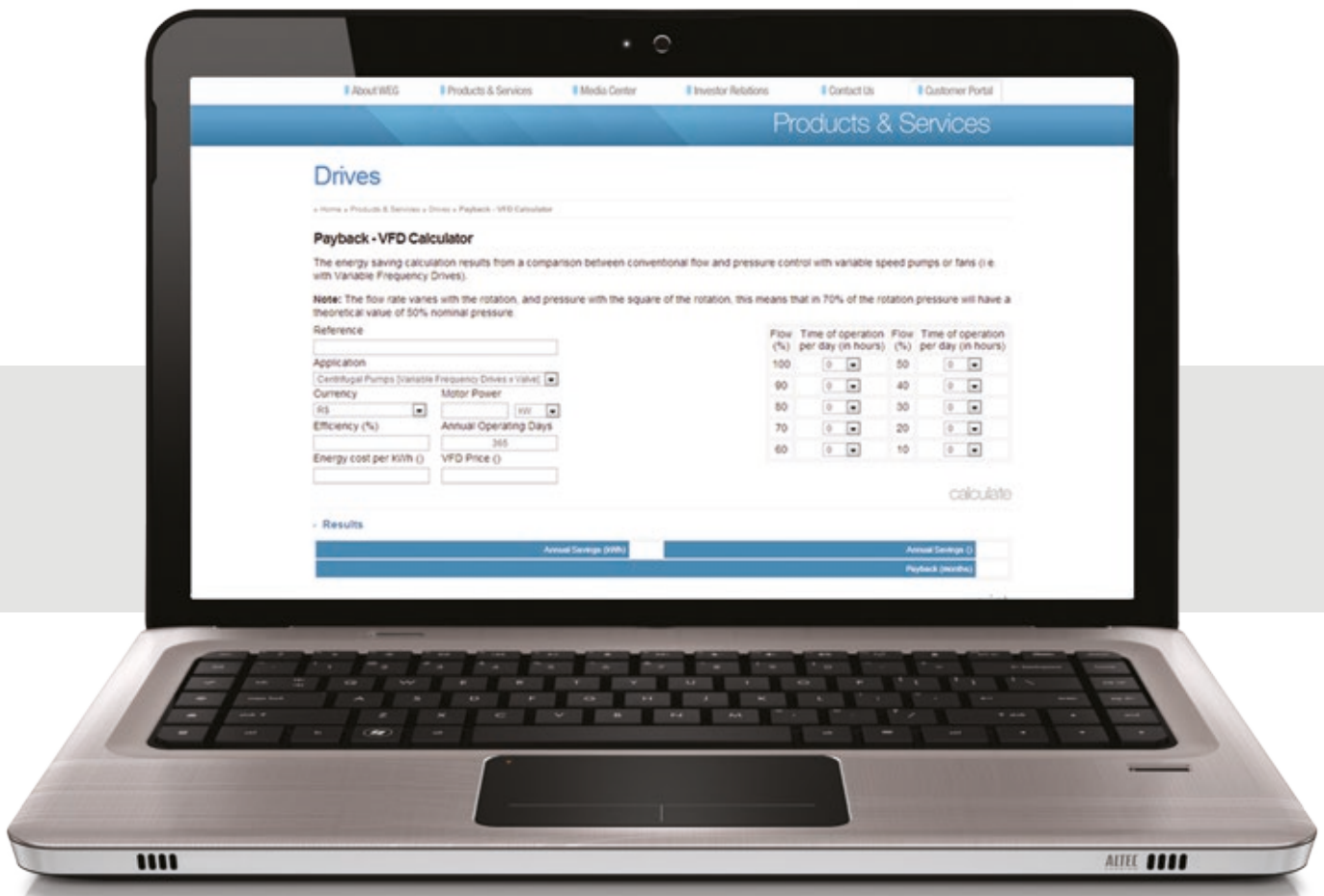
Besides being efficient in the control of electric motors, they also reduce machine wear, save raw materials, improve process quality and increase productivity.

Visit the WEG website to calculate how much energy can be saved by using the CFW500 VSD.

Ensures energy efficiency for your equipment and machines. Save money and contribute to the conservation of the environment.



Certifications



SuperDrive G2

Software application to program, control and monitor WEG VSDs. To connect CFW500 to a computer it is necessary to use a plug-in module.



Trend Function

- Online graphic monitoring of parameters/variables
- Possibility to export an image with the respective graph based upon the selected period

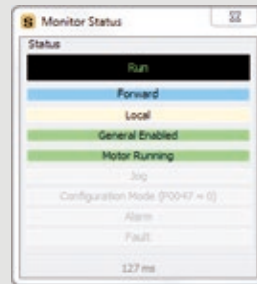
Changing and Monitoring Parameters in a List/Table

Parameter settings can be stored in a computer file format.

Number	Function	Minimum	Maximum	Factory Setting	User Setting	Unit
0	Access to Parameters	0	9999	0	0	
1	Speed Reference	0	85535	0	30	
2	Motor Speed	0	85535	0	30	
3	Motor Current	0	2000	0	0.1	A
4	DC Link Voltage (Vd)	0	2000	0	311	V
5	Motor Frequency	0	500	0	2.5	Hz
6	VFD Status	0	7	0 Ready	1: Run	
7	Motor Voltage	0	2000	0	23	V
9	Motor Torque	-3000	1000	0	-5.2	%
11	Motor Current	-1	1	0	0.75	
12	DO0 to DO1 Status	00000000b	11111111b	00000000b	00000000b	
13	DO5 to DO1 Status	00000000b	01111111b	00000000b	00000001b	
14	AO1 Value	0	100	0	4.3	%
15	AO2 Value	0	100	0	3.4	%
16	FO % Value	0	100	0	0	%
17	FO Hz Value	0	20000	0	0	Hz
18	AI1 Value	-300	100	0	0	%
19	AI2 Value	-300	100	0	0	%
20	AI3 Value	-300	100	0	-180	%
21	FI % Value	-300	100	0	0	%
22	FI Hz Value	0	20000	0	0	Hz
23	Man SW Version	0	855.35	0	1.34	
24	Sec. SW Version	0	855.35	1.11	1	
27	Plug-In Mod. Config.	00000000b	00001000b	00000000b	00000001b	
29	Power I/O Config.	00000000b	00111111b	00000000b	00000011b	
30	Heatbank Temperature	-20	150	0	25	°C
37	Motor Overload Int	0	100	0	0	%
40	PID Process Variable	0	3000	0	0	
41	PID Setpoint Value	0	3000	0	0	
47	CONF Status	0	999	0	0	
48	Present Alarm	0	999	0	0	
49	Present Fault	0	999	0	0	
50	Last Fault	0	999	0	0	
51	Current At Last Fault	0	200	0	0	A
52	DC Link At Last Fault	0	2000	0	0	V
53	Current At Last Fault	0	200	0	0	A

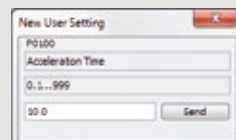
- Upload/download parameters from the PC to the CFW500 and vice versa
- Offline editing of the parameters stored on the PC

Status Monitoring



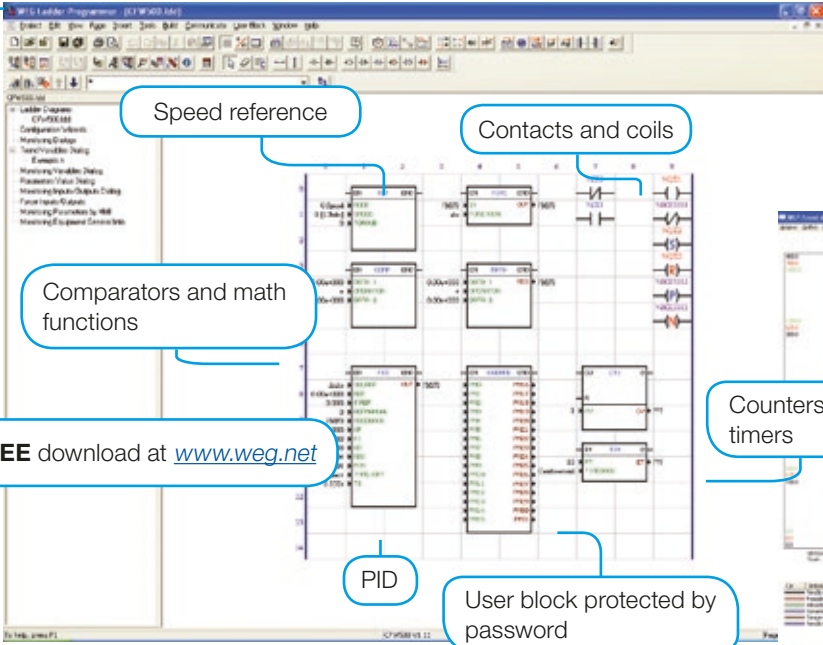
Operation with HMI

Online parameter editing.



SoftPLC - Built-in the Standard Product

Functionalities of a PLC available as standard, allowing the creation of applications. The WLP software and the SoftPLC functionality are a smart and simple way to make your CFW500, motor and application work together. Plug-in module required to connect with a computer.



Speed reference

Contacts and coils

Comparators and math functions

FREE download at www.weg.net

PID

User block protected by password

Counters and timers

Easy programming: Ladder

Trend Function

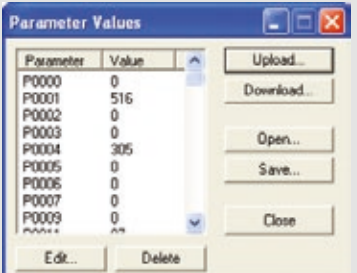
- Online graphic monitoring of parameters/variables
- Configurable up to six channels

Online Monitoring Parameters/Variables List

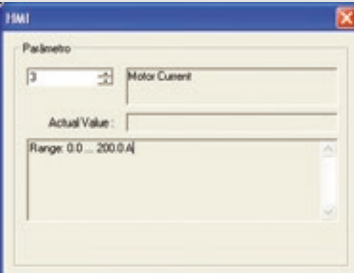
Symbol	Type	Address	Value	
Motor Current	%PD: Drive Parameter	3	9	Insert
Motor Frequency	%PD: Drive Parameter	5	511	Edit
Motor Voltage	%PD: Drive Parameter	7	188	Write
DC Link Voltage (Ud)	%PD: Drive Parameter	4	301	Delete
Analog Input AI1	%Iw: Analog Input	1	32193	Up
Digital Input DI1	%DI: Digital Input	1	0	Down

Parameter Edition

For changing the parameters values.



Parameter	Value
P0000	0
P0001	516
P0002	0
P0003	0
P0004	305
P0005	0
P0006	0
P0007	0
P0009	0



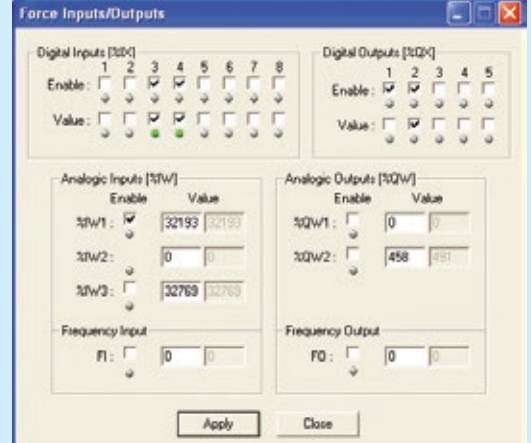
Parâmetro: Motor Current

Actual Value: []

Range: 0.0 ... 200.0 [A]

Enable/Disable I/Os

It simplifies and speeds up the validation of the application.



Digital Inputs [%DI]

Digital Outputs [%DO]


Analog Inputs [%Iw]

Analog Outputs [%Qw]

Frequency Input

Frequency Output

I/Os Monitoring



WLP I/O Monitoring

Inputs: DI1, DI2, DI3, DI4, DI5, DI6, DI7, DI8

Outputs: DO1, DO2, DO3, DO4, DO5

Coding

The CFW500 code identifies its construction characteristics, nominal current, voltage range and optionals. Using the smart code, it is possible to select the CFW500 required for your application simple and quickly.

Product and series	Model identification				Braking ¹⁾	Degree of protection ¹⁾	Conducted emission level ¹⁾	Hardware version	Software version
	Frame size	Rated current	N° of phases	Rated voltage					
CFW500	A	02P6	T	4	NB	20	C2	H00	---
CFW500	Check table below								
	NB = without dynamic braking DB = with dynamic braking								
	20 = IP20 N1 = NEMA1 enclosure								
	Blank = with no RFI filter C2 = according to category 2 of IEC 61800-3 standard, with internal RFI filter C3 = according to category 3 of IEC 61800-3 standard, with internal RFI filter								
	H00 = without plug-in module								
	Blank = standard Sx = special software								

Frame sizes	Output current	Input	Power supply voltage	Braking IGBT ²⁾	Degree of protection	Conducted emission level ³⁾	
A	01P6 = 1.6 A	S = single phase power supply	2 = 200... 240 V	NB	20 or N1	Blank or C2	
	02P6 = 2.6 A						Blank or C3
	04P3 = 4.3 A					C2	
	07P0 = 7.0 A						Blank
B	07P3 = 7.3 A	DB					
	10P0 = 10 A	Blank					
	A			01P6 = 1.6 A		NB	
				02P6 = 2.6 A		Blank	
04P3 = 4.3 A				Blank			
07P3 = 7.3 A							
B	10P0 = 10 A	DB					
	A	07P0 = 7.0 A				NB	
		09P6 = 9.6 A	Blank				
		B		16P0 = 16 A	Blank		
C				24P0 = 24 A		Blank	
	D			28P0 = 28 A			Blank or C3
			33P0 = 33 A				
		47P0 = 47 A					
E ⁴⁾		56P0 = 56 A					
A	01P0 = 1.0 A	T = three-phase power supply	4 = 380...480 V	NB	20 or N1	Blank or C2	
	01P6 = 1.6 A						Blank or C3
	02P6 = 2.6 A					Blank or C2	
	04P3 = 4.3 A						Blank or C3
06P1 = 6.1 A	Blank or C2						
B				02P7 = 2.7 A		DB	
			04P3 = 4.3 A				
			06P5 = 6.5 A				
	10P0 = 10 A						
C	14P0 = 14 A		5 = 500...600 V	DB		Blank or C3	
	16P0 = 16 A						
D	24P0 = 24 A						Blank or C3
	31P0 = 31 A						
E ⁴⁾	39P0 = 39 A	Blank or C3					
	49P0 = 49 A						
C	01P7 = 1.7 A				Blank or C3		
	03P0 = 3.0 A						
	04P3 = 4.3 A						
	07P0 = 7.0 A						
	10P0 = 10 A						
	12P0 = 12 A						

Notes: 1) To know which models have these options in the standard product the above table should be checked.

2) NB-without braking IGBT; DB- braking IGBT included; The braking resistor is not included.

3) For more information about the categories C1, C2 and C3, please consult the user's manual in the section: 3.3.2 Emission and Immunity Levels.

4) Coming soon.

Drive Ratings

The correct way to select a VSD is matching its output current with the motor rated current. The tables below present the expected motor power for each VSD model. Use the motor power ratings below only as a guidance. Motor rated currents may vary with speed and manufacturer. IEC motor powers are based on WEG 4-pole motors; NEMA motor powers are based on NEC table 430-150.

Motor Voltages Between 220 V and 240 V

Power supply	Model	Rated current	IEC		NEMA	
			50 Hz 230 V	60 Hz 220 V	60 Hz 230 V	
		A	kW	HP	HP	
200-240 V	10	CFW500 A 01P6 S2	1.6	0.25	0.25	0.33
		CFW500 A 02P6 S2	2.6	0.55	0.5	0.5
		CFW500 A 04P3 S2	4.3	1.1	1	1
		CFW500 A 07P0 S2	7	1.5	2	2
	1/30	CFW500 A 01P6 B2	1.6	0.25	0.25	0.33
		CFW500 A 02P6 B2	2.6	0.55	0.5	0.5
		CFW500 A 04P3 B2	4.3	1.1	1	1
		CFW500 B 07P3 B2	7.3	1.5	2	2
	30	CFW500 B 10P0 B2	10	2.2	3	3
		CFW500 A 07P0 T2	7	1.5	2	2
		CFW500 A 09P6 T2	9.6	2.2	3	3
		CFW500 B 16P0 T2	16	4	5	5
		CFW500 C 24P0 T2	24	5.5	7.5	7.5
		CFW500 D 28P0 T2	28	7.5	10	10
		CFW500 D 33P0 T2	33	9.2	12.5	10
		CFW500 D 47P0 T2	47	11	15	15
		CFW500 E 56P0 T2 ¹⁾	56	15	20	20

Motor Voltages Between 380 V and 480 V

Power supply	Model	Rated current	IEC		NEMA	
			50 Hz 415 V	60 Hz 460 V	60 Hz 460 V	
		A	kW	HP	HP	
380-480 V	30	CFW500 A 01P0 T4	1	0.25	0.5	0.33
		CFW500 A 01P6 T4	1.6	0.75	1	0.75
		CFW500 A 02P6 T4	2.6	1.1	1.5	1
		CFW500 A 04P3 T4	4.3	1.5	3	2
		CFW500 A 06P1 T4	6.1	3	4	3
		CFW500 B 02P6 T4	2.6	1.1	1.5	1
		CFW500 B 04P3 T4	4.3	1.5	3	2
		CFW500 B 06P5 T4	6.5	3	4	3
		CFW500 B 10P0 T4	10	4	7.5	7.5
		CFW500 C 14P0 T4	14	7.5	10	10
		CFW500 C 16P0 T4	16	7.5	12.5	10
		CFW500 D 24P0 T4	24	11	15	15
		CFW500 D 31P0 T4	31	15	25	25
		CFW500 E 39P0 T4 ¹⁾	39	18.5	25	25
		CFW500 E 49P0 T4 ¹⁾	49	22	30	30

Motor Voltages Between 500 V and 600 V

Power supply	Model	Rated current	IEC		NEMA	
			50 Hz 525 V	60 Hz 575 V	60 Hz 575 V	
		A	kW	HP	HP	
500-600 V	30	CFW500 C 01P7 T5	1.7	0.75	1	1
		CFW500 C 03P0 T5	3.0	1.5	2	2
		CFW500 C 04P3 T5	4.3	2.2	3	3
		CFW500 C 07P0 T5	7.0	4	5	5
		CFW500 C 10P0 T5	10	5.5	7.5	7.5
		CFW500 C 12P0 T5	12	7.5	10	10



Dimensions and Weights

IP20

Frame size	H mm	W mm	D mm	Weight kg
A	189.1	75.2	149.5	0.8
B	199.1	100.2	160.1	1.2
C	210	135.2	165.1	2
D	306.6	180	166.5	4.3
E ¹⁾	350	220	191.5	10

NEMA1

Frame size	H mm	W mm	D mm	Weight kg
A	223	75.2	149.5	1.05
B	243.3	100.2	160.1	1.49
C	254.8	135.2	165.1	2.35
D	362	180	166.5	4.8
E ¹⁾	405.7	220	191.5	10.4



Note: 1) Coming soon.

Accessories and Optionals

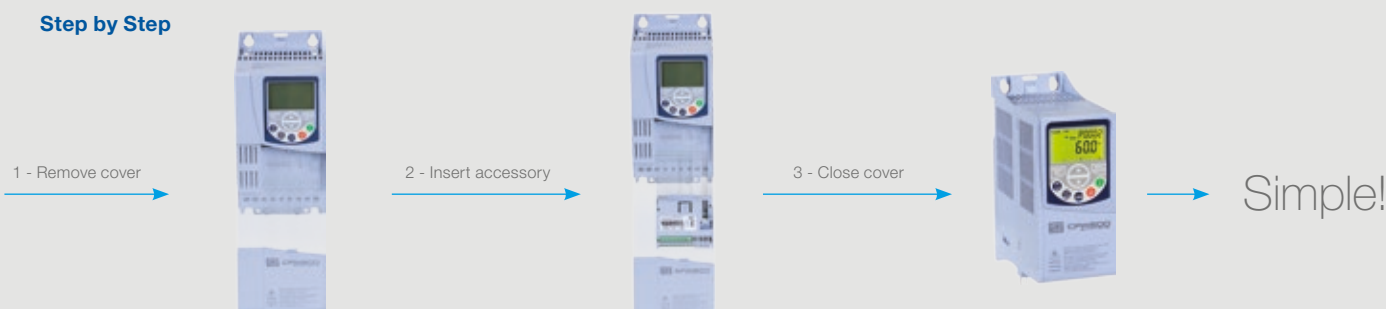
The CFW500 VSD was developed to meet the hardware configurations required by a wide range of applications. The table below presents the available options:

Option	Type ¹⁾	Description	Optional item code ²⁾	Accessory model	Available
RFI filter	Optional	Used to reduce the disturbance conducted from the CFW500 to the power supply, in the high frequency band (>150 kHz), according to standards 61800-3 and EN 55011.	C2 or C3	-	Factory installation only
Braking IGBT	Optional	Used in high-inertia applications for the fast stop of the motor by means of an external braking resistance. Resistance not included. To specify the braking resistance, refer to the CFW500 user manual.	DB	-	Factory installation only
Degree of protection NEMA1	Optional or accessory	Used for the CFW500 VSD to have degree of protection NEMA1 and/or when metallic conduits are used for the cables.	N1	CFW500-KN1A (frame size A) CFW500-KN1B (frame size B) CFW500-KN1C (frame size C) CFW500-KN1D (frame size D) CFW500-KN1A (frame size E)	Factory or user installation
Cable shield kit	Accessory	Used to shield the power and control cables. Important: for the version with RFI filter, this filter comes with the product.	-	CFW500-KPCSA (frame size A) CFW500-KPCSB (frame size B) CFW500-KPCSC (frame size C) CFW500-KPCSD (frame size D) CFW500-KPCSD (frame size E)	User installation
I/O expansion modules (plug-in) ³⁾	Accessory	Used to configure the I/O points according to the needs of the application/machine.	-	CFW500-IOS CFW500-IOD CFW500-IOAD CFW500-IOR	-
Communication module (plug-in)	Accessory	Used to communicate CFW500 with the main networks of the market (Fieldbus).	-	CFW500-CUSB (USB) CFW500-CCAN (CANopen /DeviceNet) CFW500-CRS232 CFW500-CRS485 CFW500-CPDP (Profibus-DP) CFW500-CEMB-TCP (Modbus-TCP) CFW500-CEPN-IO (Profinet-IO) CFW500-CETH-IP (Ethernet-IP)	-
Flash memory module (plug-in)	Accessory	Used to download the program from a CFW500 to others without having to power them up.	-	CFW500-MMF	-
Remote HMI	Accessory	Used to transfer the operation to the panel door or machine console. Maximum distance of 10 m. Degree of protection IP54.	-	CFW500-HMIR	-
Cables for remote HMI	Accessory	Used to interconnect the CFW500 to the remote HMI (CFW500-HMIR).	-	CFW500-CCHMIRXM, where cables with lengths (X) of 1, 2, 3, 5, 7,5 and 10 meters	-

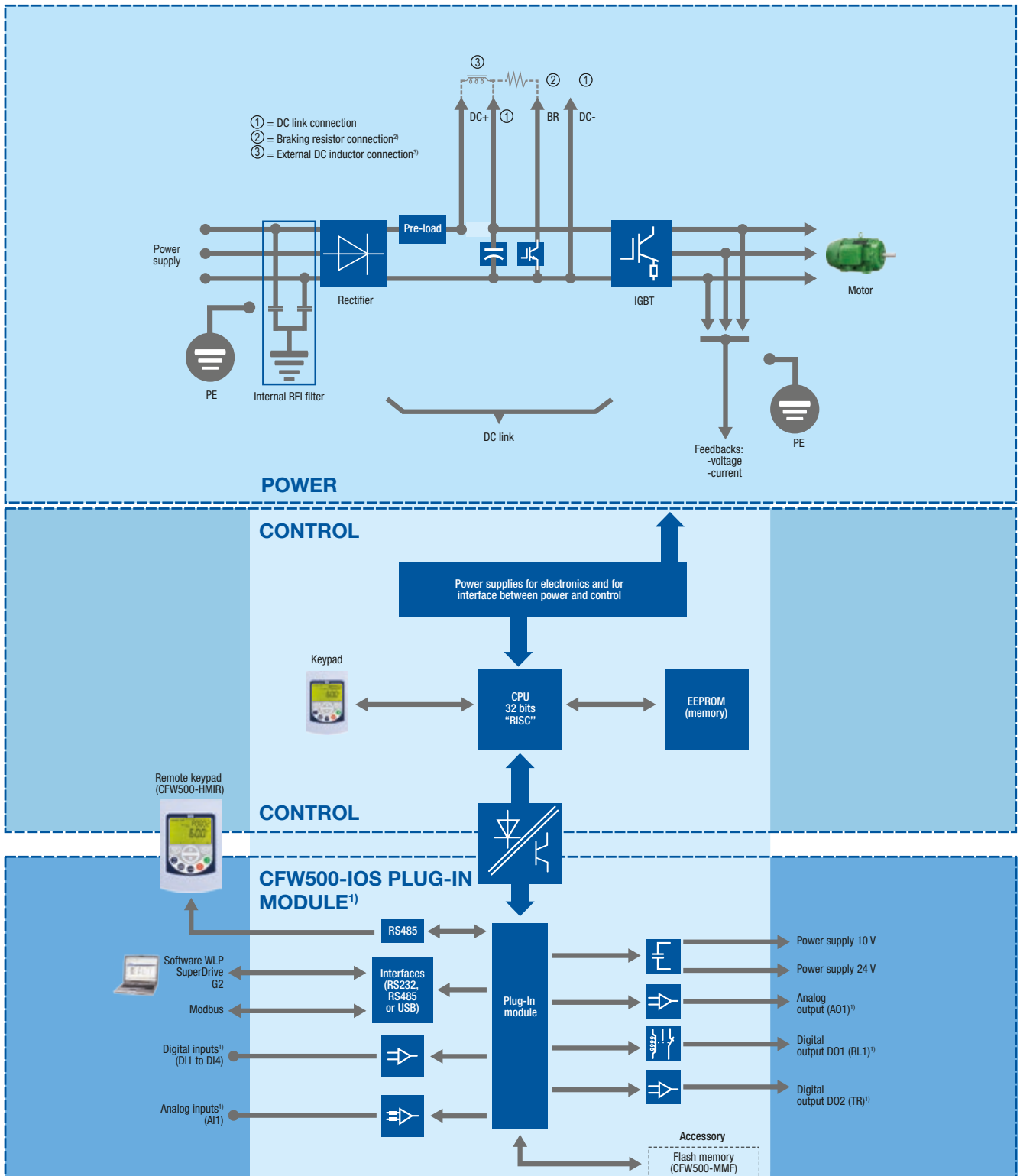
Plug-in module	Inputs		Outputs			USB Port	Fieldbus communication		Power supply	
	Digital	Analog	Analog	Digital relay	Digital transistor		Modbus-RTU RS485	Others	10 V	24 V
CFW500-IOS	4	1	1	1	1	-	1	-	1	1
CFW500-IOD	8	1	1	1	4	-	1	-	1	1
CFW500-IOAD	6	3	2	1	3	-	1	-	1	1
CFW500-IOR	5	1	1	4	1	-	1	-	1	1
CFW500-CUSB	4	1	1	1	1	1	1	-	1	1
CFW500-CRS485	4	2	1	2	1	-	2	-	1	1
CFW500-CRS232	2	1	1	1	1	-	1	RS232	-	1
CFW500-CCAN	2	1	1	1	1	-	1	CANopen / DeviceNet	1	1
CFW500-CPDP	2	1	1	1	1	-	1	Profibus-DP	-	1
CFW500-CEMB-TCP	2	1	1	1	1	-	1	Modbus-TCP	-	1
CFW500-CEPN-IO	2	1	1	1	1	-	1	Profinet-IO	-	1
CFW500-CETH-IP	2	1	1	1	1	-	1	Ethernet-IP	-	1

Notes: 1) Optional = hardware resources added to the CFW500 in the manufacturing process accessory = hardware resource requested as a separated item.
 2) Request the product according to the code available on page 10.
 3) All plug-in modules have at least one RS485 port. The CFW500-CRS485 plug-in module has two RS485 ports. The CFW500 allows installing one plug-in module per unit.

Step by Step



Block Diagram



Notes: 1) The number of inputs and outputs (analog and digital), as well as other resources, may vary according to the used plug-in module. For further information, refer to the CFW500 user manual.
 2) Not available for frame size A. Braking resistance not included.
 3) Available for frame sizes D and E. DC link inductor not included.

Technical Data

Power supply	Voltage and power range	1-phase, 200-240 V ac (+10%-15%) 0.25 to 1.5 kW (0.25 to 2 HP)
		1-phase/3-phase, 200-240 V ac (+10%-15%) 0.25 to 2.2 kW (0.25 to 3 HP)
		3-phase, 200-240 V ac (+10%-15%) 1.5 to 15 kW (2 to 20 HP)
		3-phase, 380-480 V ac (+10%-15%) 0.25 to 22 kW (0.5 to 30 HP)
		3-phase, 500-600 V ac (+10%-15%) 0.75 to 7.5 kW (1 to 10 HP)
	Supply frequency	50/60 Hz (48 Hz to 62 Hz)
Motor connection	Voltage	3-phase, 0-100% of supplied voltage
	Output frequency	0 to 500 Hz
	Displacement power factor	>0.97
	Overload capacity	1.5 x In (drive) for 1 minute every 6 minutes
	Switching frequency	Default 5 kHz (selectable 2.5 to 15 kHz)
	Acceleration time	0.1 to 999s
	Deceleration time	0.1 to 999s
Environment	Temperature	40 °C - NEMA1
		40 °C - IP20 side by side and/or with RFI filter
		50 °C - IP20 without RFI filter (except the models for 9.6 A and 24 A for 200-240 V)
		2% of current derating for each °C above the specific operating temperature, limited to an increase of 10 °C
	Humidity	5% to 95% non-condensing
Altitude	Up to 1,000 m - rated conditions	
Degree of protection	IP20 or NEMA1 (with kit NEMA1)	
Performance	V/f control	Speed regulation: 1% of the rated speed (with slip compensation) Speed variation range: 1:20
	Vector control (VWV)	Speed regulation: 1% of the rated speed Speed variation range: 1:30
Braking methods	Dynamic braking	Braking IGBT available as standard for frame sizes B, C and D. An external resistor must be installed for dynamic braking capability
	DC braking	DC current applied to the motor
Safety	Protection	Overcurrent/phase-phase short circuit in the output
		Overcurrent/phase-ground short circuit in the output
		Under/overvoltage
		Overtemperature in the heatsink
		Overload in the motor
		Overload in the power module (IGBTs)
		External alarm / fault
Setting error		
Communication	Modbus-RTU	All plug-in modules for RS485 and CFW500-CRS232 for RS232
	Profibus-DP	Plug-in module CFW500-CPDP
	DeviceNet	Plug-in module CFW500-CCAN
	CANopen	Plug-in module CFW500-CCAN
	Modbus-TCP	Plug-in module CFW500-CEMB-TCP
	Profinet-IO	Plug-in module CFW500-CEPN-IO
	Ethernet-IP	Plug-in module CFW500-CETH-IP
Chokes (external as accessory)	AC input chokes	To reduce THD
	AC output chokes	For longer motor cables

Technical Data - Standards

Safety standards	UL 508C	Power conversion equipment.
	UL 840	Insulation coordination including clearances and creepage distances for electrical equipment.
	EN 61800-5-1	Safety requirements electrical, thermal and energy.
	EN 50178	Electronic equipment for use in power installations.
	EN 60204-1	Safety of machinery. Electrical equipment of machines. Part 1: General requirements. <i>Note: For the machine to comply with this standard, the manufacturer of the machine is responsible for installing an emergency stop device and equipment to disconnect the input power supply.</i>
	EN 60146 (IEC 146)	Semiconductor converters.
Electromagnetic Compatibility (EMC) Standards	EN 61800-2	Adjustable speed electrical power drive systems - Part 2: General requirements - Rating specifications for low voltage adjustable frequency AC power drive systems.
	EN 61800-3	Adjustable speed electrical power drive systems - Part 3: EMC product standard including specific test methods.
	EN 55011	Limits and methods of measurement of radio disturbance characteristics of industrial, scientific and medical (ISM) radio-frequency equipment.
	CISPR 11	Industrial, scientific and medical (ISM) radio-frequency equipment - Electromagnetic disturbance characteristics - Limits and methods of measurement.
	EN 61000-4-2	Electromagnetic compatibility (EMC) - Part 4: Testing and measurement techniques - Section 2: Electrostatic discharge immunity test.
	EN 61000-4-3	Electromagnetic compatibility (EMC) - Part 4: Testing and measurement techniques - Section 3: Radiated, radio-frequency, electromagnetic field immunity test.
	EN 61000-4-4	Electromagnetic compatibility (EMC) - Part 4: Testing and measurement techniques - Section 4: Electrical fast transient/burst immunity test.
	EN 61000-4-5	Electromagnetic compatibility (EMC) - Part 4: Testing and measurement techniques - Section 5: Surge immunity test.
Mechanical construction standards	EN 60529	Degrees of protection provided by enclosures (IP code).
	UL 50	Enclosures for electrical equipment.



WEG Worldwide Operations

ARGENTINA

San Francisco - Cordoba
Phone: +54 3564 421484
info-ar@weg.net

Cordoba - Cordoba
Phone: +54 351 4641366
weg-morbe@weg.com.ar

Buenos Aires
Phone: +54 11 42998000
ventas@pulverlux.com.ar

AUSTRALIA

Scoresby - Victoria
Phone: +61 3 97654600
info-au@weg.net

AUSTRIA

Markt Piesting - Wiener
Neustadt-Land
Phone: +43 2633 4040
watt@wattdrive.com

BELGIUM

Nivelles - Belgium
Phone: +32 67 888420
info-be@weg.net

BRAZIL

Jaraguá do Sul - Santa Catarina
Phone: +55 47 32764000
info-br@weg.net

CHILE

La Reina - Santiago
Phone: +56 2 27848900
info-cl@weg.net

CHINA

Nantong - Jiangsu
Phone: +86 513 85989333
info-cn@weg.net

Changzhou - Jiangsu
Phone: +86 519 88067692
info-cn@weg.net

COLOMBIA

San Cayetano - Bogota
Phone: +57 1 4160166
info-co@weg.net

ECUADOR

El Batan - Quito
Phone: +593 2 5144339
ceccato@weg.net

FRANCE

Saint-Quentin-Fallavier - Isère
Phone: +33 4 74991135
info-fr@weg.net

GERMANY

Türnich - Kerpen
Phone: +49 2237 92910
info-de@weg.net

Balingen - Baden-Württemberg
Phone: +49 7433 90410
info@weg-antriebe.de

Homburg (Efze) - Hesse
Phone: +49 5681 99520
info@akh-antriebstechnik.de

GHANA

Accra
Phone: +233 30 2766490
info@zestghana.com.gh

INDIA

Bangalore - Karnataka
Phone: +91 80 41282007
info-in@weg.net

Hosur - Tamil Nadu
Phone: +91 4344 301577
info-in@weg.net

ITALY

Cinisello Balsamo - Milano
Phone: +39 2 61293535
info-it@weg.net

JAPAN

Yokohama - Kanagawa
Phone: +81 45 5503030
info-jp@weg.net

MALAYSIA

Shah Alam - Selangor
Phone: +60 3 78591626
info@wattdrive.com.my

MEXICO

Huehuetoca - Mexico
Phone: +52 55 53214275
info-mx@weg.net

Tizayuca - Hidalgo
Phone: +52 77 97963790

NETHERLANDS

Oldenzaal - Overijssel
Phone: +31 541 571080
info-nl@weg.net

PERU

La Victoria - Lima
Phone: +51 1 2097600
info-pe@weg.net

PORTUGAL

Maia - Porto
Phone: +351 22 9477700
info-pt@weg.net

RUSSIA and CIS

Saint Petersburg
Phone: +7 812 363 2172
sales-wes@weg.net

SOUTH AFRICA

Johannesburg
Phone: +27 11 7236000
info@zest.co.za

SPAIN

Coslada - Madrid
Phone: +34 91 6553008
wegiberia@wegiberia.es

SINGAPORE

Singapore
Phone: +65 68589081
info-sg@weg.net

Singapore
Phone: +65 68622220
watteuro@watteuro.com.sg

SCANDINAVIA

Mölnlycke - Sweden
Phone: +46 31 888000
info-se@weg.net

UK

Redditch - Worcestershire
Phone: +44 1527 513800
info-uk@weg.net

UNITED ARAB EMIRATES

Jebel Ali - Dubai
Phone: +971 4 8130800
info-ae@weg.net

USA

Duluth - Georgia
Phone: +1 678 2492000
info-us@weg.net

Minneapolis - Minnesota
Phone: +1 612 3788000

VENEZUELA

Valencia - Carabobo
Phone: +58 241 8210582
info-ve@weg.net

For those countries where there is not a WEG own operation, find our local distributor at www.weg.net.



WEG Group - Automation Business Unit
Jaraguá do Sul - SC - Brazil
Phone: +55 47 3276 4000
automacao@weg.net
www.weg.net

